

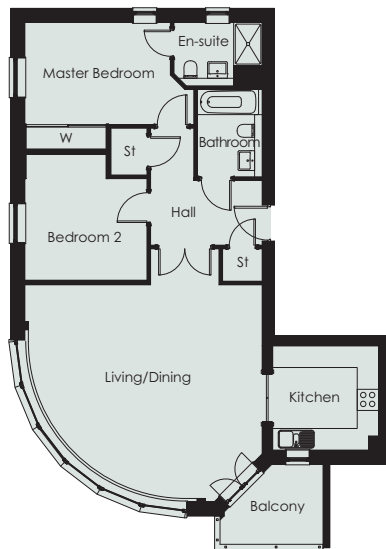
IMPERIAL GREEN

HYTHE | KENT



WISLEY HOUSE

2 bedroom apartment
Plots 69, 71 & 73

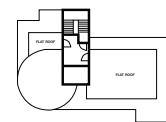


Living/Dining	6620mm x 6020mm	21'8" x 19'9"
Kitchen	2980mm x 2920mm	9'9" x 9'7"
Master Bedroom	4700mm x 3500mm	15'5" x 11'5"
En-Suite	2900mm x 1620mm	9'6" x 5'3"
Bedroom 2	3500mm x 3400mm	11'5" x 11'1"
Bathroom	2860mm x 1720mm	9'4" x 5'7"
Balcony	2500mm x 2000mm	8'2" x 6'7"

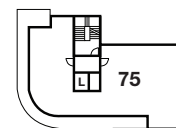
Two car parking spaces allocated

Total: 92sq m 990sq ft

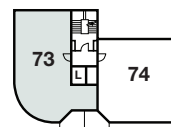
Disclaimer: Plans are indicative only and general layout may vary. Dimensions are intended for guidance.
'W' denotes wardrobe. 'St' denotes store cupboard.



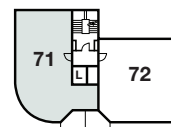
Fifth floor



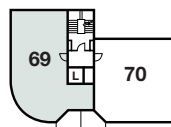
Fourth floor



Third floor



Second floor



First floor



Ground floor

Tel: 01303 233640
www.imperialgreen.co.uk