

# IMPERIAL GREEN

HYTHE | KENT



## WISLEY HOUSE

2 bedroom apartment  
Plots 70, 72 & 74



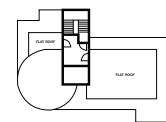
|                |                 |               |
|----------------|-----------------|---------------|
| Living/Dining  | 5500mm x 4603mm | 18'0" x 15'1" |
| Kitchen        | 2968mm x 2833mm | 9'8" x 9'3"   |
| Master Bedroom | 4147mm x 3505mm | 13'7" x 11'5" |
| En-Suite       | 2477mm x 1788mm | 8'1" x 5'10"  |
| Bedroom 2      | 3530mm x 3505mm | 11'6" x 11'5" |
| Bathroom       | 3028mm x 1828mm | 9'11" x 5'11" |
| Balcony        | 2500mm x 2000mm | 8'2" x 6'7"   |

Two car parking spaces allocated

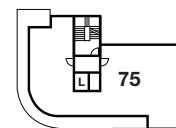
**Total:** 90sq m 968sq ft

Disclaimer: Plans are indicative only and general layout may vary. Dimensions are intended for guidance only.  
'W' denotes wardrobe. 'St' denotes store cupboard.

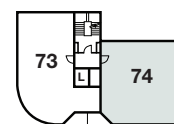
Tel: 01303 233640  
[www.imperialgreen.co.uk](http://www.imperialgreen.co.uk)



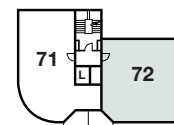
Fifth floor



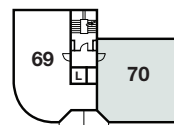
Fourth floor



Third floor



Second floor



First floor



Ground floor